

Education City

www.educationcity.com



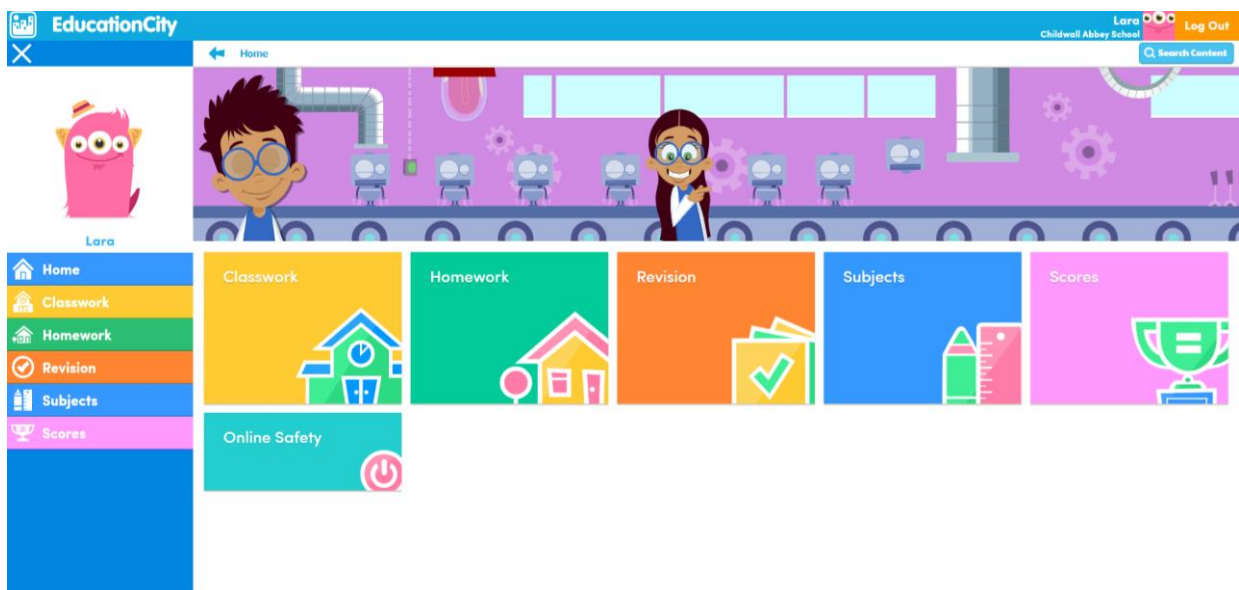
A message from our team during COVID-19

We understand that many schools across our nation are experiencing disruptions during these difficult times. As a company committed to supporting education and

Click "log in"

A screenshot of the Education City login form. The form is titled 'Username and Password' and is set against a blue background with a subtle pattern. It contains three input fields: 'Username' with a person icon, 'Password' with a key icon, and 'Country' with a globe icon and the text 'England'. Below the fields is a link that says 'Forgotten your login details?'. At the bottom right of the form is an orange 'Log In' button.

Enter username and password and click "log in"



Click Classwork and complete work for each date stated.